

# SIMSEAL<sup>®</sup>



SEAL WITH GLOBAL EXCELLENCE  
PRODUCT CATALOGUE 2024



From Global Pioneers  
to Australian Mastery:

# SIMSEAL®

Your Portal to  
World-Class Sealants  
and Adhesives





Established in Queensland, Simseal® has evolved into a leading Australian name in the construction sealants and adhesives industry. Our mission is to merge global expertise with local craftsmanship, ensuring each product we offer is a testament to unparalleled quality and innovation. We pride ourselves on sourcing the finest materials worldwide, rigorously tested to meet strict quality standards. At Simseal®, we are dedicated to delivering reliable, high-performance solutions to our diverse clientele, embracing the spirit of excellence in every aspect of our business.





## Hello to all our valued partners,

As the CEO of Simseal®, I am honored to extend an invitation to you to become part of a significant venture that is setting new standards in the sealant and adhesive market. Our Queensland roots have grounded us in a tradition of excellence, and from here, we are reaching out across industries to deliver solutions that not only perform but last.

To the diligent tradies, the visionary entrepreneurs, and the teams dedicated to crafting our built environment, know that Simseal® is here as your steadfast ally. Our aim is to provide you with products that you can trust implicitly, ensuring the integrity and longevity of your work.

Our commitment is to maintain the highest standard of excellence in our products, to continue innovating, and to support the great work you do. We are not just suppliers; we are your partners in construction. Together, let's build a legacy that stands strong and speaks of quality.

Looking forward to many successful projects together.

Best regards,

*Shane Simmons*  
**Shane Simmons**  
Chief Executive Officer  
Simseal®

# Table of Contents

Navigate your way through our comprehensive catalogue with ease. This Table of Contents is your guide to finding the perfect Premium Sealant Product for any project. Whether you're sealing skyscrapers or weatherproofing windows, the right solution is at your fingertips.

Company Introduction	3
CEO's Message and Vision	4
Table of Contents	5
MS Polymer Sealants	6
Acrylic Sealants	8
Waterproofing	10
Flooring & Adhesives	14
Polyurethane & Polybutene	20
Hybrid PU Sealants	22
Fire Rated Sealants	23
Silicone Sealants	24
Photoluminescent Paintings	28
Accessories	30
Customer Testimonials	34
Contact Us	35

# MS POLYMER SEALANTS



## OCTOGRIP

### Instant grab adhesive MS Sealant

Simseal® OctoGrip is a high-strength, MS Polymer-based adhesive sealant that offers instant grip, removing the need for nails, screws, or supports. It provides an immediate hold in just one second, significantly reducing the necessity for additional bracing and is low in VOCs.

#### Applications:

- Bathroom accessories, panels, skirting board, windowsills, stripes, thresholds, mirrors.
- Insulation materials
- Coach work
- Metal connecting joints in shipbuilding industry.



WHITE

PACKAGING:  
290 ML CTG



## SIMCLEAR

### Clear colour MS Polymer Sealant

Simseal® Simclear is a versatile, clear MS Polymer sealant ideal for durable bonding and sealing across various materials like plastics, metals, rubber, wood, and more. It cures to form a long-lasting, flexible, and waterproof seal suitable for multiple applications.

#### Applications:

- Various materials
- Plastics (nylon, PVC, ABS).
- Metal (stainless steel, aluminium, copper, etc.).
- Rubber (natural rubber, synthetic rubber, EPDM, etc.)
- Natural materials (wood, leather, etc.).
- Inorganics (concrete, natural stone, tiles, glass).



CLEAR

PACKAGING:  
290ML CTG



## SIMFLEX 11FC

### High modulus one-component MS sealant

Simflex® 11FC MS Sealant is a high-performance, single-component sealant with outstanding resistance to weather, UV, and temperature. It's low in VOCs, free from solvents and isocyanates, which means it won't shrink or bubble. This sealant also avoids the common staining and streaking issues associated with silicone sealants.

#### Applications:

- Various materials
- Plastics (nylon, PVC, ABS).
- Metal (stainless steel, aluminium, copper, etc.).
- Rubber (natural rubber, synthetic rubber, EPDM, etc.)
- Natural materials (wood, leather, etc.).
- Inorganics (concrete, natural stone, tiles, glass).



WHITE



GREY



BLACK

PACKAGING:  
600 ML SSG

# SEALING SIMFLEX

## HIGH-PERFORMANCE MS SEALANTS



### SIMFLEX FACADE

#### High-performance advanced MS sealant

Simflex® Facade, using cutting-edge MS Polymer tech, offers superb UV protection and weather resistance with a matte finish. It stays clean due to its low static charge, minimising dust attraction and streaking on claddings. Once cured, it's permanently flexible with a  $\pm 50\%$  movement capacity, making it perfect for composite panels and non-staining on various surfaces including natural stone.

#### Applications:

- Excellent UV resistance
- Ideal for composite panels
- Silicone oil-free – Non-staining on adjacent substrates
- ASTM C920 (Class 50) compliant
- Paintable
- Low static charge
- Isocyanate-free – No air bubbling
- Solvent-free – No shrinkage
- Primerless bonding to most surfaces
- Matte finish



### SIMFLEX MULTIBOND

#### General-purpose advanced MS sealant

Simflex® Multibond is a versatile, single-component sealant crafted with advanced MS Polymer technology, offering strong adhesion to multiple surfaces including concrete. It's permanently flexible once cured, with a  $\pm 50\%$  movement capability, and boasts excellent UV and weather resistance, along with a matte finish.

#### Applications:

- Various materials
- Plastics (nylon, PVC, ABS, etc.)
- Metal (stainless steel, aluminium, copper, etc.)
- Rubber (natural rubber, synthetic rubber, EPDM, etc.)
- Natural materials (wood, leather, etc.)
- Inorganics (concrete, natural stone, tiles, glass, etc.)



# ACRYLIC SEALANTS



## RAPID DRY

### Flexible, rapid dry acrylic sealant

Simseal® Rapid Dry is a high-quality acrylic sealant designed for quick painting within 10 minutes. Ideal for sealing gaps and joints where movement or vibration is expected, it's paintable and perfect for projects requiring a speedy finish.

#### Applications:

- 10 minutes paint over time
- Low VOC compliance
- Paintable
- Versatile & flexible
- Easy clean up with water



PACKAGING  
450G CTG



## ULTRA FLEX

### High Elastic Acrylic Sealant

Simseal® Ultra Flex is a Premium, high elastic acrylic sealant, ideal for both outdoor and indoor sealing tasks. Enhanced with UV resistance properties, it can handle up to  $\pm 25\%$  movement. Designed to be paintable, it's perfect for sealing gaps and joints in areas subject to significant movement or vibrations.

#### Applications:

- $\pm 12.5\%$  movement capability
- Low VOC compliance
- Paintable
- Versatile & permanently flexible
- Easy clean up with water



PACKAGING  
450G CTG



## SIMFLEX SUPERCRYL

### One-component water resistant acrylic sealant

Simflex® Supercryl is a one-component, acrylic dispersion-based sealant with superb adhesion to moist and absorbent surfaces. It's highly effective against water, wind, and moisture on aluminium, wood, and PVC frames and windows. This sealant remains extremely flexible without damaging the surface, forming a permanent, water-repellent, and UV-resistant layer upon curing.

#### Applications:

- Easy application with gun.
- Form permanently water-repellent layer after curing.
- Remains flexible for a long time after curing.
- Paintable
- Does not effect the application surface
- Flexible
- UV resistant
- Solvent free
- Excellent adhesion to moist and absorbent surfaces.
- Water, wind and moisture resistant on aluminium, wood and PVC frames and windows.
- Non corrosive towards metals.



PACKAGING  
600 ML SSG



# GAP FILLER

Flexible, rapid dry acrylic sealant



INTERIOR &  
EXTERIOR



LOW VOC  
COMPLIANCE



PAINTABLE

Simseal® Gap Filler Acrylic Sealant is a water-based caulk ideal for indoor and outdoor gaps and joints. It adheres well to surfaces including concrete, wood, brick, metal, PVC, and marble, and is perfect for use around doors, windows, cabinets, wood flooring and skirting, especially in areas with little movement or water exposure.

### Applications:

- ±12.5 % movement capability
- Low VOC compliance
- Paintable
- Versatile & flexible
- Easy clean up with water

PACKAGING  
450G CTG



WHITE



# WATERPROOFING



## Simshield Sub Tile X

### Waterproofing Membrane

Simshield™ Sub Tile X is a water-based waterproofing product designed for tiling in wet areas. It's regularly updated to reflect the latest in industry practices and advancements. Applicators should always use the most current technical guidance available on Simseal's website. The membrane is intended for sloped surfaces that drain water effectively and any tiling applied over it should conform to the Australian standards for ceramic tile installation.

#### Applications:

- Showers, bathrooms, kitchens, laundries, and toilets, in compliance with AS/NZ 3740 standards.
- External balconies, rooftops, and podium levels, following the AS/NZ 4654.2 guidelines.
- Compatible with concrete, cement-rendered masonry, fibre-cement sheeting, water-resistant plasterboard, and certain types of structural plywood.



## Simshield Supremo

### Water based PU Liquid Waterproofing Membrane

Simshield™ Supremo is a flexible, water-based polyurethane waterproofing membrane, complying with Australian waterproofing standards. It's ideal for sloped surfaces leading to drainage areas and requires a two-coat application on various surfaces. Not suitable for constantly wet environments like pools or spas, it's also important that any tiling over it follows Australian standards for ceramic tiles.

#### Applications:

- Showers, bathrooms, and kitchens, following AS/NZ 3740 standards.
- External use on balconies and rooftops, in line with AS/NZ 4654.2 guidelines.
- Intended to be overlaid with tiles or protective surfaces.
- Concrete, cement masonry, fibre-cement sheeting, water-resistant plasterboard, and specific structural plywood.



## Simshield ULTRA X

### All-in-one Rapid Setting Waterproofing Membrane

Simshield™ Ultra X is a quick-drying, water-based polyurethane waterproofing membrane that complies with AS3740 standards. It's formulated for sloped surfaces leading to drainage and requires tiling systems to follow the Australian Standard for ceramic tile installation. This product is applied in a two-coat system on both porous and non-porous surfaces.

#### Applications:

- Under tiles in internal wet areas (showers, bathrooms, etc.) as per AS/NZ 3740.
- External balconies, rooftops, and podiums under tiles, following AS/NZ 4654.2.
- Exposed membrane in lightly trafficked external areas.
- Concrete, masonry, fibre-cement sheeting, plasterboard, and certain plywoods.
- Planter boxes, retaining walls, and tiled swimming pools.





## Simshield Cemento-Max

### One component cementitious flexible

Simshield™ Cemento-Max is a one-component, flexible, fibre-reinforced waterproofer made from cement that has been modified with special polymers, carefully chosen aggregates, and unique waterproofing additives, creating a flexible waterproofing coating that can withstand bending and flexing.

#### Applications:

- Wet areas (showers, bathrooms, kitchens, and laundries)
- External balconies, rooftops, and raised platforms.
- Exposed waterproof layer in areas with light foot traffic.
- Planter boxes and retaining walls.
- Swimming pools.
- Variety of surfaces including concrete, masonry, plasterboard, and plywood.



PACKAGING  
20 KG



## Optimum Prime

Optimum Prime is a ready-to-use water-based primer, designed for use on porous surfaces. It's acrylic backbone allows it to be used outdoors.

#### Applications:

- Priming porous surfaces before tiling or waterproofing
- Outdoors/Indoors
- Floors/Walls
- Porous surfaces

PACKAGING  
20L & 5L



## Mega Prime

Mega Prime is a one-component ready-to-use solvent-free primer and adhesion promoter, specifically designed to improve bonding onto impervious substrates. It provides high strength film over non-porous surfaces that will allow bonding of cementitious products such as levelling compounds, tiling, render, etc.

#### Applications:

- Existing tiles
- Old & crunchy vinyl tiles
- Residues of old acrylic, alcohol or bituminous adhesives
- Old flooring paintings
- Most pre-formed shower bases
- Porous substrate (concrete, screed, etc.)

PACKAGING  
7KG

# WATERPROOFING



## Simshield Waterproof Sealant

Simshield™ Waterproof Sealant is a non-toxic, flexible liquid rubber ideal for DIY use, effectively sealing cracks, vents, and joints against moisture. Easy to apply with a brush, roller, or sprayer, it stretches significantly and is durable enough for extreme weather, providing robust protection against water damage.

### Applications:

- Metal roofs
- Concrete roofs,
- Box gutters
- Tanks and Throughs
- Planter boxes
- Retaining Walls
- Sheds
- Wooden or Metal decks
- Ponds



BROWN-BLACK

PACKAGING  
1, 2, 4, 10 & 15L



## Simshield Protective Top Coat Sealant

Simshield™ Protective Top Coat Sealant offers a UV Protective and Power Saving Top Coat, ideal for outdoor use. This top coat not only protects against harmful UV rays but also helps save energy by reflecting sunlight, reducing heat absorption and lowering cooling costs. It's perfect for roofs, decks, and patios, keeping surfaces looking new for longer.

### Applications:

- Concrete and unglazed terracotta roof tiles
- Metal roof surfaces, including Colorbond
- Concrete tilt slab buildings
- Fibro cement sheeting
- Cement rendered surfaces
- Brick and block construction

PACKAGING  
1, 2, 4, 10 & 15L



## Simshield Rust Inhibitor Primer

Simshield™ Rust Inhibitor Primer is specifically formulated for rusty roofs, serving as a key component in the Roof Sealing System. It primes and safeguards metal surfaces, enhancing the Protective Top Coat's adhesion and ensuring optimal coverage. Ideal for treated bare metal surfaces, this primer is crucial in preventing further corrosion and prolonging the lifespan of metal roofs by providing a stable base for additional coatings.

### Applications:

- New Steel
- Old Steel
- Galvanised Iron
- Alloys
- Non-ferrous metals



LIGHT GREY

PACKAGING  
0.5, 1, 2, 4,  
10 & 15L



### Simshield Primer/Sealer

Simshield™ Primer is an integral component of the Roof Sealing System, developed to prime coated surfaces and improve the adhesion of membrane top coats. When applied correctly, it ensures optimal coverage of the membrane coating.

#### Applications:

- Concrete & Render
- Teracotta tiles
- Zincalume sheets
- Insulated panels



CLEAR

PACKAGING  
0.5, 1, 2,  
4, 10, 15, 20,  
30, 40 & 50L



### Simshield Traffic Seal

Simshield™ Traffic Seal is a superior, UV-protective, water-based coating with a three-component mix, including a cementitious co-polymer. Designed for blending with Traffic Seal Hardener and oxides, it forms a highly flexible, strong, and abrasive-resistant finish that's ideal for both indoor and outdoor use.

#### Applications:

- Simshield Waterproof Sealant
- Box Gutters , Roofs
- Balconies and decks
- Masonry and plaster
- Rock / Coal / Steel / Bitumen
- Concrete and bricks
- Most primed metals
- Clay or sand surfaces
- Cement and asbestos



WHITE

PACKAGING  
15L



### Simshield Traffic Seal Hardener

Simshield™ Traffic Seal Hardener is an essential component of the three-part Traffic Seal coating system. Designed to mix with Traffic Seal and oxides, it creates a flexible, strong coating. This combination yields an abrasive-resistant, UV-stable finish, suitable for various interior and exterior applications.

#### Applications:

- Designed to be mixed with Simshield Traffic Seal to produce a high build coating which is extremely flexible and very strong



GREY

PACKAGING  
2KG



### Simshield Grit

Simshield™ Grit is intended to be scattered over a wet layer of Waterproof Sealant, creating a seamless, non-slip, high-grip, and water-impermeable coating. It also improves the adhesion between the Simshield Waterproof Sealant and Simshield Traffic Seal.

#### Applications:

- This product is designed to be applied over a wet layer of Simshield Waterproof Sealant, creating a seamless, non-slip, high-grip, and water-impermeable coating. It also improves the adhesion between the Waterproof Sealant and the Traffic Seal.

PACKAGING  
4KG

# FLOORING & ADHESIVES



## INSTANT No Nail

### One-component construction adhesive

Simseal® Instant No Nail is a single-component adhesive sealant, designed for bonding a range of common construction materials. It features strong initial grip, excellent adhesion, and maintains its position on vertical surfaces without slumping.

#### Applications:

- SVHC compliant
- Mirror and polystyrene safe
- Strong initial grab
- Non-drip paste
- Excellent adhesion on most substrates
- Can be extruded even at low temperatures



BROWN

PACKAGING  
350G CTG



## SIMFLEX FLOORING

### Wood flooring adhesive advanced MS sealant

Simflex® Flooring adhesive utilises MS Polymer technology for superior performance over traditional polyurethane adhesives. It cures with air moisture to form a strong, elastic bond, ideal for wood flooring and wall decor, and is waterproof. This adhesive allows natural wood movement without failure and is easy to apply, effectively bridging gaps without causing wood warping. It's environmentally safe, free from hazardous materials like isocyanates, and has a low VOC content.

#### Applications:

- Certified Green Sealant Adhesive
- Single-component
- Resistant to aging
- Free of water, 100% solid content
- Free of solvent - Non-etching & no shrinkage
- Free of isocyanate - Non-hazardous
- Low odor & low VOC - SGBPLS certified, meets LEED/SCAQMD rule 1168
- Notched trowel ridges hold firm
- Minimise hollow spots by bridging gaps
- Rapid strength build-up and short curing time - Fast job completion
- Easy surface clean up - Easy cleaning on prefinished wood



BROWN

PACKAGING  
600 ML SSG



## CARPET GRIP

### Solvent based adhesive

Simseal® Carpet Grip is a cost effective solvent-based adhesive specially formulated for carpet bonding. It is easy to spread and it grabs immediately upon contact. It is easy to use and it offers good bonding strength.

#### Applications:

- Cost effective
- Specially for carpet bonding
- Excellent adhesion



PACKAGING 3L



## VINYL GRIP

### High-strength water based adhesive

Simseal® VinylGrip is a high-strength, water-based, and easy-to-spread adhesive designed for installing vinyl floor coverings like vinyl planks, vinyl sheets, vinyl tiles etc. onto most types of subfloor surfaces. The adhesive will become tacky and is able to grab resilient vinyl floors, easing installation works Especially when the subfloor is not 100% even.

#### Applications:

- High initial tack
- Ready mixed, easy to use
- Installation and clean-up is simple
- Good residual tack
- Long working time, repositioning is possible
- Low odour and low VOC
- Environmentally friendly



PACKAGING 5KG

- Also available in 600 mL sausages



## Simfloor HP

Simfloor™ HP is an advanced, EN 14293:2006 compliant adhesive for bonding parquet to subfloors. This eco-friendly, low-VOC formula is solvent and isocyanate-free, non-flammable, and ready to use. It's easy to apply, moisture-resistant, and adheres well to Australian hardwoods. Remaining flexible post-cure, it provides strong initial grab, excellent bond strength, and good acoustic properties. Suitable for radiant heating systems, Simfloor HP is a quality Australian-made product.

### Applications:

- Suitable for adhering parquet, softwood, hardwood, engineered, and bamboo flooring to concrete subfloors.
- Can be used for attaching recommended acoustic underlays between the subfloor and the flooring system.
- ALSO AVAILABLE IN 600 ML SAUSAGES



PACKAGING  
16 KG



## Simfloor 2 in 1

Simfloor™ 2 in 1 is an innovative flooring adhesive, offering both moisture control and exceptional bond strength. It features low moisture vapour permeability and anti-fracture capabilities, bridging cracks up to 3mm. Environmentally friendly with zero VOCs and no restrictions on board size, it also includes Blockade® Anti-microbial protection and an isocyanate-free formula. Additionally, it's suitable for use over radiant heating systems, making it a versatile choice for modern flooring installations.

### Applications:

- Suitable for substrates such as concrete, terrazzo, ceramic tiles, well-bonded vinyl sheets, timber, plywood, and cement backer board.
- Can be used to adhere parquet, cork, solid strip softwood, hardwood flooring, engineered flooring, and bamboo flooring.



PACKAGING  
26 KG



## Simfloor 3 in 1

Simfloor™ 3 in 1 combines adhesive, moisture control, and sound reduction in one, with advanced Thickness Control™ Spacer Technology for consistent application. It offers excellent sound insulation and can bridge cracks up to 3mm, while being environmentally friendly with zero VOCs. Additionally, it's unrestricted by board size, includes anti-microbial protection, and is suitable for radiant heating systems, making it a versatile choice for flooring.

### Applications:

- Compatible with substrates like concrete, terrazzo, ceramic tiles, timber, plywood, and cement backer board.
- Adheres to various flooring types, including parquet, cork, softwood, hardwood, engineered, and bamboo flooring.



PACKAGING  
26 KG





## Simfloor SF

Simfloor™ SF is a top-choice adhesive for timber, compliant with EN 14293:2006 standards and recommended by leading timber manufacturers. This Australian-made product is solvent-free with zero VOCs, non-flammable, and ready to use without mixing. It's easy to apply, water-resistant, and tested for strong adhesion to various Australian hardwoods. Remaining flexible post-cure, it offers excellent bond strength and acoustic properties, and is suitable for use over radiant heating systems.

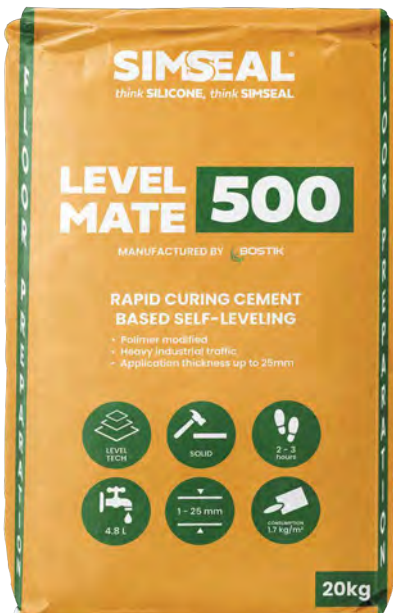
### Applications:

- Suitable for adhering parquet, solid strip softwood, hardwood, engineered, and bamboo flooring to concrete subfloors.
- Can be used to attach recommended acoustic underlays between the subfloor and flooring system.



BROWN

PACKAGING  
16 KG



## Level Mate 500

Simseal® Level Mate 500 is a quick-setting, polymer-modified cementitious underlay designed for maximum flow without shrinkage or cracking, suitable for application thicknesses from featheredge to 25mm. It's ready for foot traffic in 2 to 3 hours and is a single component mix requiring only water. The product allows for very fast application in a single operation and is dimensionally stable with rapid curing. Level Mate 500 is ready to receive vinyl and timber flooring after 16 hours, and carpet and tile in 6 to 8 hours. It can also be directly applied onto prepared concrete surfaces.

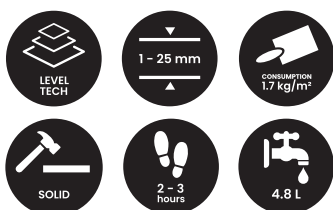
### Applications:

- Ideal underlay for vinyl and timber floor coverings, also suitable under carpet and tile for quick covering times.
- Suitable for reinstating new or existing concrete floors exposed to foot traffic, industrial equipment, fork lift traffic, or trolleys.
- Applicable in residential, commercial, and industrial settings.
- Can withstand heavy industrial traffic.
- Suitable for use in wet areas, though not for immersed environments.
- Compatible with under subfloor heating systems.



GREY

PACKAGING  
20 KG



# SIMSEAL



# SEAL<sup>®</sup>



# POLYURETHANE & POLYBUTENE



## SIMFLEX 1

### One component, Class A Polyurethane Sealant

Simflex 1® is a low modulus, single-component, Class-A polyurethane sealant made in Australia. Upon curing, it forms a tough yet flexible seal, accommodating cyclic expansion and compression movements of up to 100% ( $\pm 50\%$ ) of the initial joint width. It is characterized by its excellent durability and ease of use, requiring no mixing. Additionally, Simflex 1 is rated for acoustic insulation and can be painted over, adding to its versatility in various applications.

#### Applications:

- Insitu concrete and render
- Precast and tilt up panels
- Brickwork and block work
- Plasterboard face and paper lined recessed edges
- Fibre cement sheet
- Aluminium windows\*
- GRC, fibreglass and mostly specialty panel systems

\*Must conduct P.A.T.S. (Pre-tested Adhesion to Substrate)



PACKAGING  
600 ML SSG



## SIMFLEX 1 PLUS

### Low Modulus Polyurethane Joint Sealant

Simflex® 1 Plus is a low modulus, New Generation (Flex-IQ) polyurethane sealant, ideal for construction and expansion joints. Upon curing, it forms a tough, flexible, bubble-free seal that can handle  $+100\%/-50\%$  joint movement. It's extremely elastic with over 1000% elongation at break and can be applied to damp substrates. This sealant, made in Australia, is easy to use, sag-free, UV resistant, and paintable, with no hazard labels.

#### Applications:

- Insitu concrete and render
- Precast and tilt up panels
- Aluminium composite materials\*
- Brickwork and block work
- Metal cladding\*
- Plasterboard face and paper lined recessed edges
- Fibre cement sheet
- Aluminium windows\*
- Granite, sandstone, and marble

GRC, fibreglass and mostly specialty panel systems

\*Must conduct P.A.T.S. (Pre-tested Adhesion to Substrate)



PACKAGING  
600 ML SSG



## SIMFLEX FC

### One component, Fast Cure Polyurethane Sealant

Simseal® Simflex FC is a fast-curing, one-component polyurethane sealant with excellent weather resistance and durability. It offers strong adhesion and flexibility for both internal and external applications, accommodating ±25% joint movement. This Australian-made sealant is paintable, resistant to aging, fungal attacks, and various chemicals, and requires no mixing.



#### Applications:

- Seals gaps and adheres façade/cladding panels to building materials\*.
- Suitable for construction, expansion, floor, and concrete joint sealing.
- Trafficable areas like stairs, roads, and pavements.
- Compatible with GRC, fibreglass, and specialty panel systems\*.
- Pick-resistant and chemical-resistant areas.
- Potable water tanks and door/window framing\*.



WHITE



GREY



BLACK

PACKAGING  
600 ML SSG



## COOL SEAL

### One-component, non-drying mastic

Simseal® Cool Seal is a non-drying, polybutene rubber-based mastic that does not harden but rather remains paste-like, and permanently soft. It has excellent water vapour transmission and cold temperature resistance. Cool Seal is well-suited for sealing cold rooms and other prefabricated construction applications. Ideal for sealing most plastics, metals, glass, masonry, and wood.



#### Applications:

- Low VOC compliant
- Moisture resistant
- Non-skinning
- Excellent adhesion



WHITE

PACKAGING  
300 ML CTG

# HYBRID PU SEALANTS



## SIMFLEX HYBRID PU

### Modified polyurethane sealant for construction

Simseal® Simflex Hybrid PU is one-component, moisture curing modified polyurethane sealant. Good sealing performance, no corrosion and no pollution to base material and environment-friendly. Good bonding performance with cement and stone.

- Applications:**
- Environment friendly.
  - Good weather-resistance.
  - Bonds well with many substrate.
  - suitable for Bonding of galvanized sheet with cement, tile, stone, and metal substrates



PACKAGING  
600 ML SSG



## SIMFLEX HYBRID FC

### Low Modulus Polyurethane Joint Sealant

Simseal® Simflex Hybrid FC is one-component, moisture curing modified polyurethane sealant. Good sealing performance, no corrosion and no pollution to base material and environment-friendly. Good bonding performance with Glass and aluminium.

- Applications:**
- Environment friendly.
  - Good thixotropy and extrusion.
  - Bonds well with many building substrates.
  - Fast tack free time.



PACKAGING  
600 ML SSG

# FIRE RATED SEALANTS



## SEAL STRONG, SECURE LONG: INFERNOFLEX PROTECTION



### ONE PART FIRE RATED INTUMESCENT POLYURETHANE JOINT SEALANT

Simseal® Infernoflex One is a fire-rated intumescent, low modulus, one-component, Class-A polyurethane sealant. Once cured, it forms a tough, flexible fire-rated seal that can handle cyclic expansion and compression movements of 50% ( $\pm 25\%$ ) of the initial joint width. It's resistant to normal weathering conditions including rain, sunlight, snow, sleet, ozone, and atmospheric contamination and pollution.

#### Applications:

- In situ concrete floors and walls
- Precast and tilt up panels
- Brickwork and blockwork
- Rendered masonry
- Plasterboard (Fire rated and/or acoustic rated)
- Fiber cement sheet (Fire rated and/or acoustic rated)



LIMESTONE



GREY

PACKAGING  
600 ML SSG



### FIRE RATED ACRYLIC SEALANT

Simseal® Infernoflex Acrylic is a single-component, non-sag, fire-rated sealant based on acrylic, suitable for construction joints and service penetrations in plasterboard, concrete floors, and masonry walls. It's a gun grade acrylic sealing compound, designed for sealing low movement (up to  $\pm 25\%$ ) interior joints in masonry and plasterboard, offering up to 4 hours of fire barrier protection.

#### Applications:

- Suitable for sealing gaps in concrete walls, floors, and plasterboard, as well as around service penetrations in fire-prone areas. It's ideal for interior acoustic joints and perimeter sealing of doors and windows. Additionally, it's useful in new construction and repair projects to prevent fire and smoke spread.



GREY

PACKAGING  
600 ML SSG



# SILICONE SEALANTS



## S60 CLAD & GLAZE



### 100% calcium carbonate, high performance silicone sealant

Simseal® S60 Clad & Glaze is a neutral cure silicone sealant, enhanced with 100% calcium carbonate, offering excellent adhesion and durability for glazing, weather sealing, and cladding. It creates a strong seal on materials like glass, ceramic, metal, brick, and concrete, and is highly resistant to weathering and UV, retaining its properties for extended periods.

#### Applications:

- 100% neutral silicone
- ±50 % movement capability
- Certified Green Sealant
- APEO-, formaldehyde- and phthalate free
- Weatherproof seal
- Flexible
- Indoor and outdoor use
- Matte finish.



PACKAGING:  
300 ML CTG  
600 ML SSG

## MULTI PURPOSE



### General purpose acetoxy silicone sealant

Simseal® Multi Purpose Sealant is a general purpose acetoxy silicone sealant. It has excellent resistance to weathering, UV radiation, vibration, moisture, ozone, temperature extremes, airborne pollutants, and many cleaning detergents and solvents. This elastomeric sealant is extremely elastic upon curing. Specially formulated to achieve low VOC.

#### Applications:

- 100% acetic silicone
- Low VOC compliant
- Food contact safe
- Industrial grade
- Flexible
- Indoor and outdoor use



PACKAGING:  
300 ML CTG

## ROOF, GLASS & GUTTER



### Weathering high performance silicone sealant

Simseal® Roof, Glass & Gutter Silicone Sealant is a neutral cure silicone sealant with excellent resistance to weathering, UV radiation, vibration, moisture, ozone, temperature extremes, airborne pollutants, and many cleaning detergents and solvents. It is a single-component elastomeric sealant that is permanently elastic upon curing.

#### Applications:

- 100% neutral silicone
- Certified Green Building Standard
- Food Contact Safe
- ±50 % movement capability
- Excellent weathering resistance
- Permanently flexible
- Indoor and outdoor use



PACKAGING:  
300 ML CTG



# SS100

## Sanitary Sealant

Simseal® SS100 100% Neutral Sanitary Sealant is a one-part, 100% oxime, neutral curing adhesive/sealant containing anti-fungicide to prevent mould growth. It resists mildew when exposed to prolonged hot and humid environments and is suitable for sealing in kitchens, vanities, bathrooms, shower screens and any other wet area applications. SS100 is food safe.



PACKAGING  
300 ML CTG

MORE  
INFO





## NATURAL STONE

### Non-staining, one-component silicone sealant

Simseal® Natural Stone is a one-component, neutral cure silicone sealant known for its excellent adhesion to most exterior building materials without needing a primer. It's a non-staining sealant that works well in all seasons, maintaining good gun workability. After curing, it remains flexible at both low (-50°C) and high temperatures (150°C). While it adheres well to most substrates, a recommended primer is advised for certain materials, including concrete, brick, and other porous substrates.

#### Applications:

- Suitable for both vertical and horizontal surfaces.
- High elongation and resilience.
- Withstands temperature-induced movements.
- Single liquid type, easy to use.
- Non-sag 100% silicon product that hardens at room temperature.
- Excellent weather resistance and motion resilience.
- Great workability in low temperatures.
- Quick hardening properties.
- Strong adhesion to most materials without needing a primer.



WHITE



GREY



BLACK

PACKAGING  
300 ML CTG



## RTV MULTIPURPOSE

### Heavy duty silicone sealant

Simseal® Multipurpose RTV Sealant is the 100% silicone sealant formulated for heavy duty applications. It makes reliable "formed-in-place" gaskets that resist cracking, shrinking and migration caused by thermal cycling. Ideal to replace almost any cut gasket. Also use to seal, bond, repair, mend and secure glass, metal, plastics, fabric, vinyl, weather stripping and vinyl tops. Temperature resistant up to 250 °C.

#### Applications:

- Temperature resistant up to 250°C
- Oil, coolant, and water resistant
- Forms leak-proof gaskets in seconds



CLEAR



GREY



BLACK

PACKAGING  
300 ML CTG



# MEET THE ROADBONDS

W  
E  
L  
C  
O  
M  
E  
T  
O  
O  
U  
R  
S  
I  
T  
E



Roadways & Highways



Bridges & Overpasses



Airport Runways & Taxiways



Parking Lots



Sidewalks



Building Facades

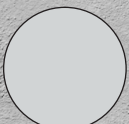
## ROADBOND 888



Roadbond 888 is a **high-performance, non-slump silicone sealant for concrete joints**, curing at room temperature with excellent flexibility and adhesion to various substrates. It's resistant to weather, UV rays, and extreme temperatures, maintaining its properties from -60°C to 200°C for a long-lasting application.



Black



Light Grey



## ROADBOND SL



Roadbond SL is a **self-leveling, one-part silicone sealant** that cures at room temperature with ultra-high elongation and durability. It's flexible, suitable for moving joints, and adheres well to clean, dry construction substrates like concrete and steel without a primer. Resistant to UV rays, ozone, extreme temperatures, and weather conditions, it maintains its properties between -60°C to 200°C, ensuring a long service life.



Light Grey

# PHOTOLUMINESCENT PAINTINGS



**SIMSEAL**<sup>®</sup>  
PROUDLY PRESENTS

# LuminoKrom<sup>®</sup>



**10 HOUR  
VISIBILITY**



**ZERO  
ELECTRICITY**



**GLOBAL  
GROWTH**



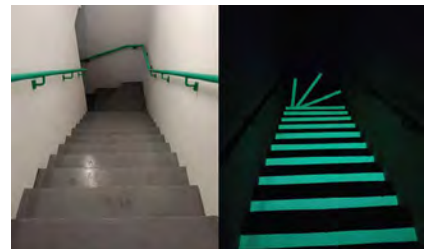
**LuminoKrom<sup>®</sup> Technology** uses photoluminescence and solar energy to recharge the paint indefinitely with daylight or artificial light. The paint stores light during the day and emits a diffuse luminosity for ten hours at night, without electricity or CO2 emissions.



**LUMINESCENT  
ROAD MARKINGS**



**INCREASE  
VISIBILITY**



**ILLUMINATED  
SIGNAGE**

LuminoKrom<sup>®</sup> is the only photoluminescent paint on the market that has a certified luminescence level of class G according to the international standard ISO 17398.

## ENHANCING NIGHTTIME SAFETY WITH PHOTOLUMINESCENT PAINT SOLUTIONS



### PERFORMANCE

- Highest duration of luminosity on the market (+10h), certified Class G
- CE ISO17398 standard
- Recharges in a few minutes, even under cover in the middle of the forest or in poor conditions (rain, fog...).
- French patented technology

# ACCESSORIES



## Yellow Cone Nozzle

Easily cuts to size with utility knife, and fits all standard size Albion, Simseal, COX and Newborn bulk sausage guns.

- Fits most standard bulk or sausage guns.



## Plastic Sausage Sealant Nozzle w/ holder

Plastic sausage sealant nozzle with nozzle holder.

- Various sizes of hard plastic
- Gives you a solid application
- Durability to hard or coarse surfaces.



## 45 Nozzle

45° angle to give you additional reach and the ability to get around corners.

- Fits all standard size Albion, Simseal, COX and Newborn bulk sausage guns
- Reduces strain



## 360 Nozzle

All corner reusable caulking nozzle. The flexible nozzle can increase in size by pushing more ball joints to extend it further. Remove old silicone and re-use.

- Enter hard to reach places
- Standard connection part and can be replaced
- Foldable tip
- indoor and outdoor caulking



## 45 Degree Bent Nozzle

45° Nozzles are bent at 45° angle to give you additional reach and the ability to get around corners. Easily cuts to size with utility knife, and fits all standard size Albion, Simseal, COX and Newborn bulk sausage guns. Reduces strain by eliminating the need to hold dispensing guns at uncomfortable angles.



## Caulking Nozzle Set

This set, featuring a bottom connector and brush, offers easy performance for caulking work. It includes 14 different sizes to suit various needs.

- Made of sturdy stainless steel
- Reusable and durable
- Rust-proof
- Wear-resistant
- Easy to clean and use.



## High Performance Cartridge Gun

- Accepts both 310ml and 400ml cartridges.
- 10 oz/ 310 ml single cartridge
- 50~300ml, 10:1 chubpac cartridge
- 26:1 handle drive
- Twin gripping plate
- Aluminum casting handle
- Riveted, reinforced metal carriage
- High viscosity materials easily extruded
- Specially for jobs in cold weather



## High Performance Sausage Gun

- 20 oz/ 600 ml capacity
- 26:1 handle drive
- Aluminium sealant holder tube
- Aluminium casting handle
- Twin gripping plate
- High viscosity materials easily extruded
- Specially for jobs in cold weather
- Includes 1 piston & 1 nozzle



## Cordless Caulking Gun

Cordless caulking applicator 18V with 2pcs batteries packed with a tool box. For sausage and cartridge sealant use.



## Quick Dry

Spray a fine mist over the Simshield Waterproof Sealant to instantly set the product, accelerate curing and protect it from approaching rain.



## Simprime N40

Simprime N40 is a clear, non-staining, solvent-based primer and cleaner for promoting the adhesion of polyurethane sealants and waterproof membrane systems to non-porous substrates such as rigid plastics and most metals.



## Simprime N49

Simprime N49 is a primer designed for use with polyurethane sealant range to ensure adhesion to porous substrates, particularly with water immersed applications.



## Geo Textile

The GEO TEXTILE is the perfect addition to your Liquid Rubber Waterproof Sealant application. It's designed to be applied / sandwiched in between 2 layers our Simshield Waterproof Sealant. It provides excellent reinforcement and protection.



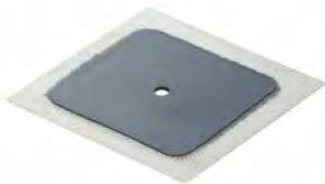
## Seam Tape

The SEAM TAPE is designed to seal gaps, seams, tears and joints. It must be coated using our Waterproof Sealant or one of our Simshield Coating Products to form a durable waterproof protective seal and prevent UV damage.



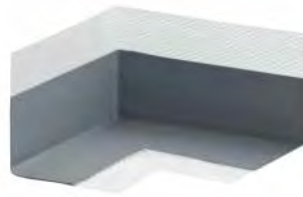
## Simtape™ FA Sealing Tape NG 120

NBR rubber elastic sealing tape with low textile content. The tape exhibits excellent recovery characteristics and is fully silicone compatible.



## Simtape™ FA Wall Sleeve NG

Simtape™ FA Wall Sleeve NG offers a watertight, permanently elastic sealing solution, made from NBR-Rubber with a central fabric layer. This composition ensures excellent bonding with nearly all waterproofing materials used under tiles, covering the entire surface of the packing.



## Simtape™ FA Inside Corner NG

Simtape™ FA Inside Corner NG is watertight, durable-elastic sealing. The pre-formed pieces are made from NBR-Rubber with a centrally inserted fabric layer. This material basis causes an excellent bonding with almost any waterproofing materials used under tiles extending over the entire surface of the corner.



## Simtape™ FA Outside Corner NG

Simtape™ FA Outside Corner NG is watertight, durable- elastic sealing. The pre-formed pieces are made from NBR-Rubber with a centrally inserted fabric layer. This material basis causes an excellent bonding with almost any waterproofing materials used under tiles extending over the entire surface of the corner.

# ACCESSORIES



## Steel Nozzle Set

Includes nozzles and tape. Caulking nozzle stainless steel caulk nozzle applicator with base caulk finisher sealant finishing tool. Stainless steel nozzles:

- 5mm
- 6mm
- 7mm
- 9mm
- 10mm
- 12mm
- 13mm
- 16mm
- 20mm



## Safety Glasses

These anti-fog, anti-static, and anti-scratch polycarbonate glasses comply with Australian standards and offer protection against harmful UV rays. To maintain the glasses, clean them with a dry cloth; using water or alcohol can damage the anti-fog coating.



## Single-Edge Scraper

Single-Edge Scraper. Mini Scraper with Carbon Steel.

- Use for light scraping on wood, metal and glass.
- Small size allows for scraping in confined areas
- 10pce blades included



## Sealant Finishing & Removal Tools

9pc Silicone sealant spatulas, scraper cement caulk removal tool and grout spreader tool. Finishing sealant grout kit. Includes:

- Spatulas
- Scraper cement caulk removal tool
- Grout spreader tool



## Finishing Sealant & Grout Kit

3 piece set. Sealant finishing tool, 5 reusable plastic silicone pads for tooling off sealant.

- Unique V-Shape design
- Steel removal tool with steel grout scraper
- Ideal for removing old sealant, sticky glue, bumps and dents from hard surfaces



## Glass Safety Scrapers

Glass safety scrapers with 5 blades is Ideal for general purpose scraping tasks. Cap for safe storage.

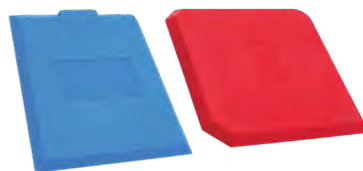
- 5 replacement blades
- Ideal for DIY, handyman and construction use



## Simseal Stainless Steel Spatula Set

Simseal stainless steel spatula set for tooling off sealant. Rounded tips for standard applications, yet easy to modify for unique applications.

- 7-Piece Streamline Spatula Set.
- Comfortable Curved Handle.
- Precision ground for optimum flexibility for perfectly finished joints.
- Easy solvent clean-up.



## Finishing Spatula

Ideal for tooling off sealant from Glass or any substrate to create a flat finish. Glazing tools, silicone spatula / scraper.

- Lightweight flexible polymer design
- Developed to reduce adhesion of silicone and other sealants to spatula
- Smoother results and faster clean-up



## Caulk Spatula Set

This set includes 7 offset caulking spatulas, offering:

- Knuckle protection on deep, rough substrate joints.
- Tip widths from 3/8" to 1-1/2".
- Stainless steel blades for optimum flex and minimal drag.
- Wood handles and blades unaffected by solvents for easy clean-up.





### Small and Large Wooden Paddle Pop Sticks

Ideal for sealant applicators for tooling off sealant from most substrates less than 10mm (small pack) and from 10mm to 20mm (large pack).

- Food grade safe
- Sturdy designed
- Used by industry professionals.



### Rolling Knee Creeper

- Rolling knee pads with cushioning and mobility.
- Durable ABS plastic, 2" swivel castors.
- Built-in tool tray and holder.
- Ideal for painting, tiling, auto work, and landscaping.



### Backing Rod

Backing Rod is manufactured from extruded, open cell polyurethane foam, available in rods with different diameters and lengths. Improved cure rate of sealant due to open cell structure.

- No bond to most sealants
- Compatible with cold applied sealants (polyurethane, silicones)
- Highly flexible
- Compressible
- Odourless

Different rod diameters:

- 10mm
- 16mm
- 22mm
- 28mm
- 38mm
- 50mm



### Plastic Scraper Set

Ideal for removing old adhesives, glues, mouldy silicone or polyurethane. Safe on most surfaces.



### Sealant Removal Tool & Scraper

Quickly removes old sealant. The sealant removal tool & scraper tool is ideal for removing old silicone, sealant & caulk prior to applying any new sealant.

- Lightweight
- Easy to clean
- Ideal for removing old silicone, sealant & caulk



### Simseal Ph7 Handling Fluid

Simseal Ph7 Handling Fluid is used for all substrate types including natural stone to eliminate any stains when tooling off sealant.

- Prevents stains on natural stone and other substrate types
- Easy to use and apply
- Helps maintain the appearance of the substrate
- Can be used for a variety of sealing applications
- Comes in a convenient size and weight for easy handling and storage



### PU Marine Grade Adhesive

Simseal PU Marine Grade Adhesive is a single-component, polyurethane-based wood adhesive that cures with air moisture and offers excellent water resistance.

- Speed and high adhesion strength
- Low pressure time with its efficient formulation.
- Solvent Free
- Suitable for different type of substrates/surfaces
- Water resistant



### Ultimate Outdoor Sharp Edge Tape

Multi surface tape. Ideal for achieving sharp, clean paint lines. Moisture resistant wash tape. High visibility for easy identification. Removes cleanly up to 60 days from most surfaces.

Available in both roll & tower pack:

- 24MM - 6 pk
- 36MM - 4 pk
- 48MM - 3 pk

# Customer Testimonials



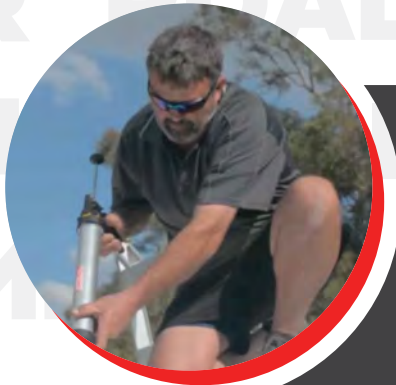
**Paul**  
**Capalaba Caravan Repairs**

We've been using Simseal® SS100 for all our silicone needs, from bathrooms to roofs, and we absolutely love it. It's an excellent product that offers great value for the price.



**Chantelle**  
**Quality Seal Australia**

Working with Simseal® is incredibly refreshing. Their values of reliability, trustworthiness, and clear communication align perfectly with ours. We particularly enjoy their diverse range of colours in products.



**Steve**  
**AllOvaOz**

I've been working with Simflex Facade for all our work over the last few years, and honestly, it's been fantastic. It's a top-notch product that never lets us down. I just can't see us using anything else now.



**Rekha**  
**Stone Galleria**

We rely on Simseal® for all our work involving natural stone, marble, and granite, especially for kitchen benchtops and vanities. It's just perfect. For us, Simseal® is the product to have.



## Contact Us

Reach out to our team for further information on specific products and quotes or visit our website to view all the product TDS's and SDS's.



### Simseal® HQ

Unit 8/33-43 Meakin Road  
Meadowbrook  
QLD, 4131



### Website

[www.simseal.com.au](http://www.simseal.com.au)



### Phone

1300 SILICONE



### E-mail

[info@simseal.com.au](mailto:info@simseal.com.au)



Follow Us

